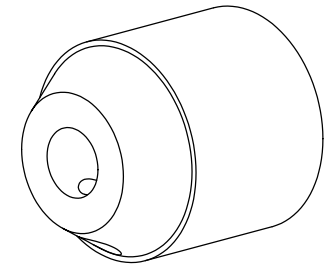
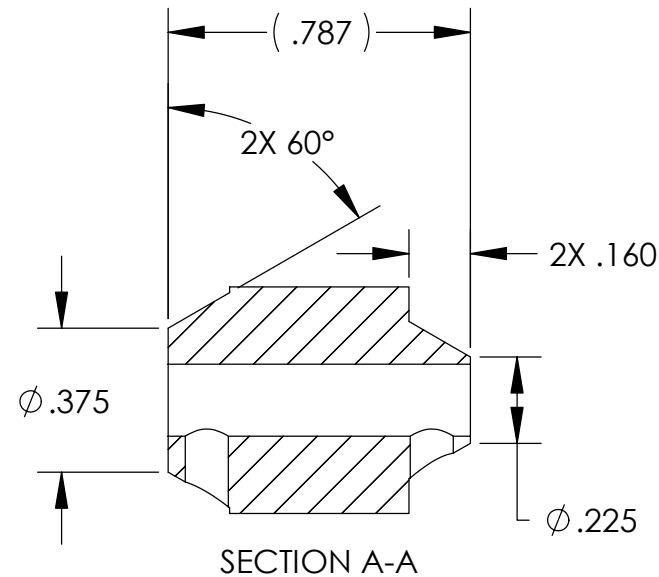
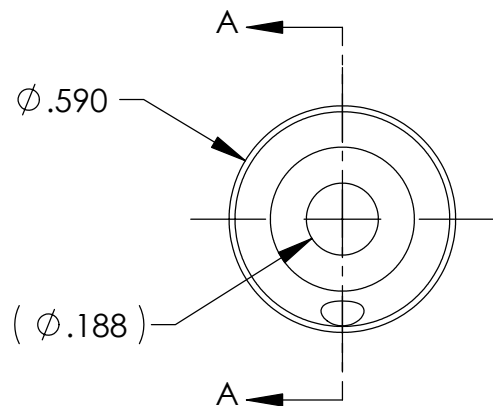


| REVISIONS |             |      |
|-----------|-------------|------|
| REV       | DESCRIPTION | DATE |
|           |             |      |
|           |             |      |



# NOTES:

1. MAKE FROM HELICAL #W715-6-6.
2. EXPOSED SET SCREW HOLES IN WELD PREP ARE ACCEPTABLE.
3. EXCEEDING .160 TO CUT PAST THREADS IS ACCEPTABLE.

|   |  |  |                 |                      |              |     |
|---|--|--|-----------------|----------------------|--------------|-----|
| <b>UNLESS OTHERWISE SPECIFIED:</b>  |  | <div>High Precision Devices</div> <div>1668 Valtec Lane, Suite C, Boulder, Colorado 80301<br/>Phone: (303) 447-2558 Fax: (303) 447-2548 Web Site: <a href="http://www.hpd-online.com">www.hpd-online.com</a></div> |                 |                      |              |     |
| THIS PRINT & RELATED MODEL ARE THE DOCUMENTATION OF RECORD. MODEL DIMS ARE BASIC OR NOM. TO ".XXX" TOL INTERPRET DWG PER ASME Y14.5M 1994                                   |  |  |                 |                      |              |     |
| DIMENSIONS ARE IN INCHES<br>.X ±.030 .XX ±.015 .XXX ±.005<br>ANGULAR TOL: ± 1° SURFACE ROUGHNESS: 63  |  | TITLE:<br><div>p02101-330 flex coupler</div>   |                 |                      |              |     |
| INTERNAL AND EXTERNAL INTERSECTIONS SHALL BE UNIFORMLY FINISHED WITH A CHAMFER .005/.010 X 45° OR RADIUS .005/.010. CHAMFER ALL THREADED HOLES 110% OF MAJOR DIAMETER X 45° |  |  |                 |                      |              |     |
| MATERIAL: -   |  | CONFIGURATION: 00-Default  |                 |                      |              |     |
| FINISH: N/A   |  | SIZE   | QTY PER ASSM: 1 | SCALE: 2:1           | SHEET 1 OF 1 | REV |
|   |  | A  | DATE: 5/26/2004 | DRAWN BY: C. Danaher |              | A   |